

SOCIAL PROGRESS

and

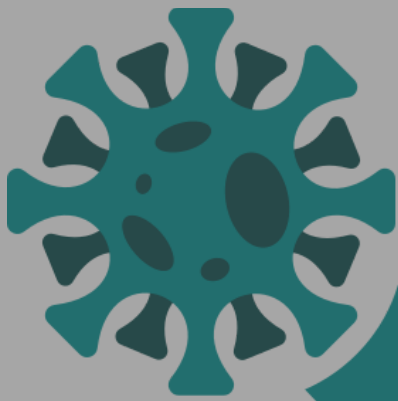
COVID 19

CRISIS



SOCIAL
PROGRESS
IMPERATIVE

**THE SOCIAL PROGRESS INDEX SHOWS
THAT COUNTRIES WITH HIGHER SOCIAL
PROGRESS WERE MORE RESILIENT TO
THE WIDER SOCIAL IMPACTS OF THE
COVID CRISIS.**



RESILIENCE

**SOCIAL
PROGRESS
IMPERATIVE**

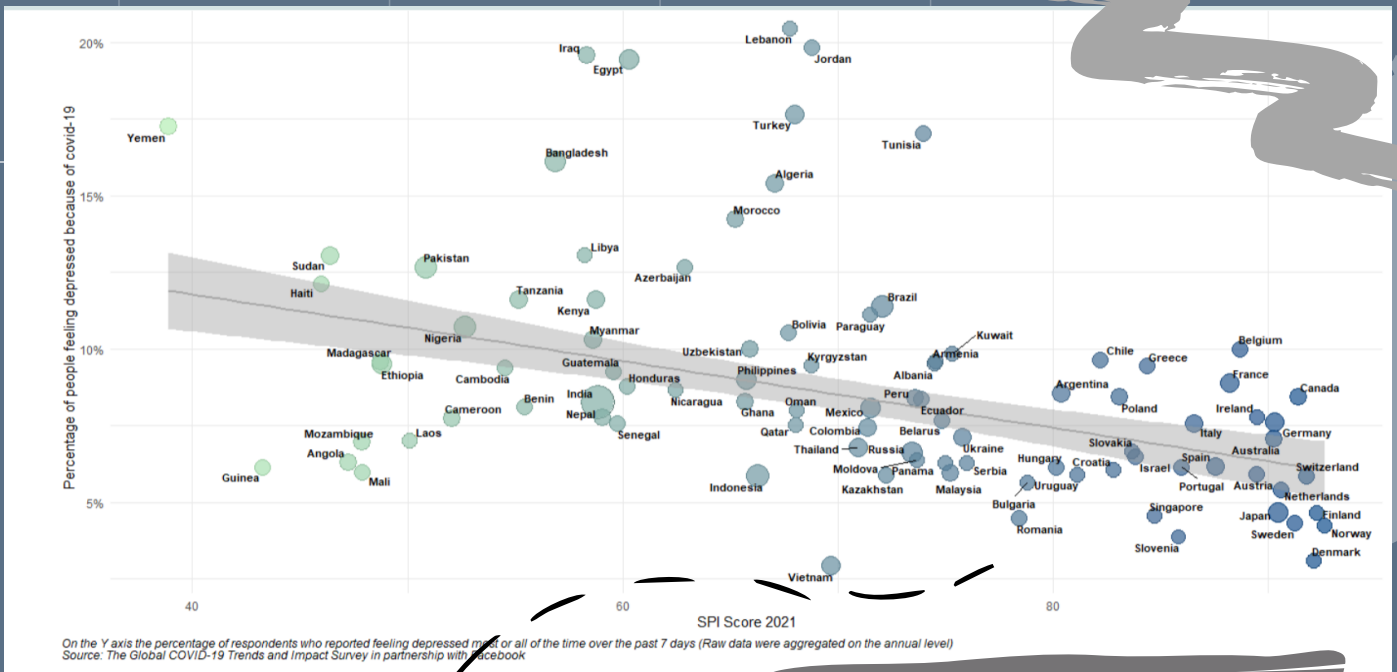
THE PANDEMIC BROUGHT TRAUMA AND DEVASTATION TO COMMUNITIES ACROSS THE WORLD, BEYOND SICKNESS AND DEATH TOLL. IT IMPACTED MENTAL HEALTH, FOOD SECURITY, EDUCATION AND MORE. OUR DATA SHOW THAT THE COUNTRIES WITH HIGHER SOCIAL PROGRESS ARE ALSO THE ONES WHO HAVE BEEN MOST RESILIENT TO THE NON-HEALTH RELATED STRESSES CAUSED BY THE PANDEMIC.



HIGHER LEVELS OF SOCIAL PROGRESS ACROSS THE BOARD, NOT JUST INVESTMENT IN ANY ONE PARTICULAR AREA, MAY BE AN IMPORTANT FACTOR FOR WEATHERING THE MULTIDIMENSIONAL EFFECTS OF FUTURE SHOCKS.

SOCIAL
PROGRESS
IMPERATIVE

COUNTRIES WITH LOWER SOCIAL PROGRESS SCORES HAD A HIGHER PERCENTAGE OF PEOPLE WHO FELT DEPRESSED DURING COVID-19



**SOCIAL
SYSTEMS**

HEALTH

EDUCATION

**SOCIAL
SYSTEMS**

**EQUALLY, THE SOCIAL PROGRESS INDEX SPOTLIGHTS
INEQUALITIES EXACERBATED BY THE COVID-19 PANDEMIC**

**SOCIAL
PROGRESS
IMPERATIVE**



**COUNTRIES WITH LOWER SOCIAL
 PROGRESS SCORES HAD MORE
 PEOPLE WORRIED ABOUT HAVING
 ENOUGH TO EAT**

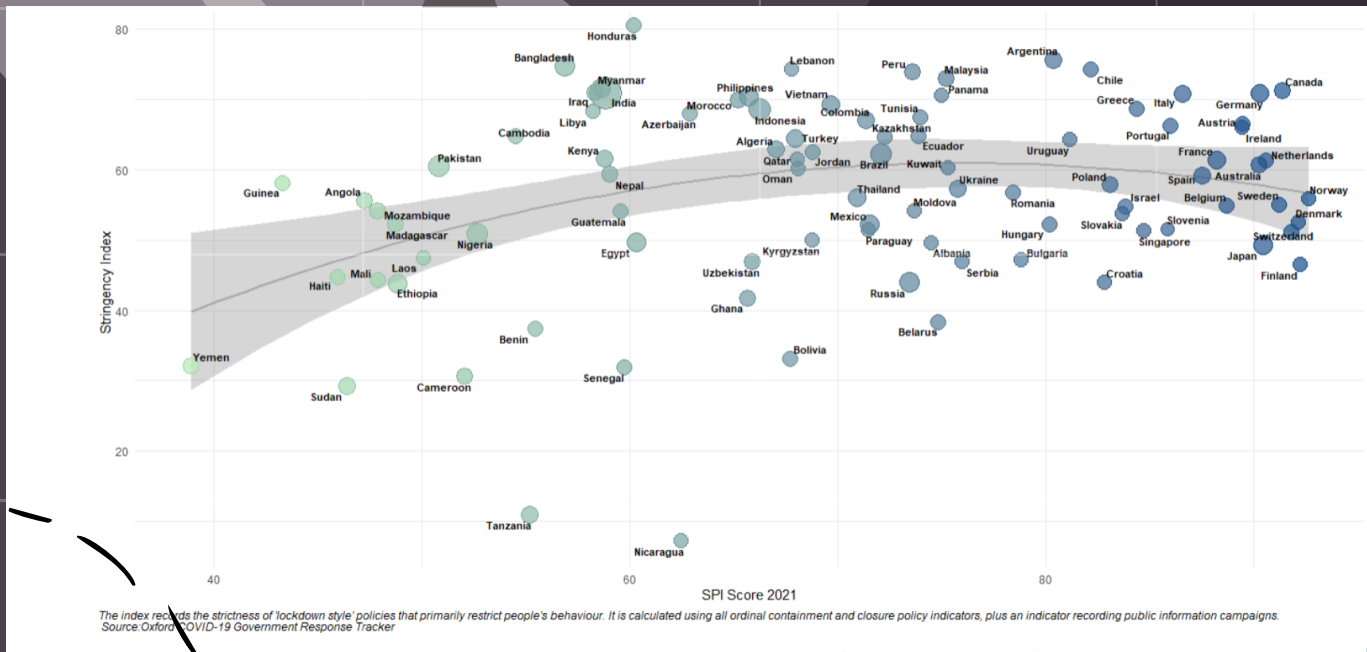


**SOCIAL
 PROGRESS
 IMPERATIVE**

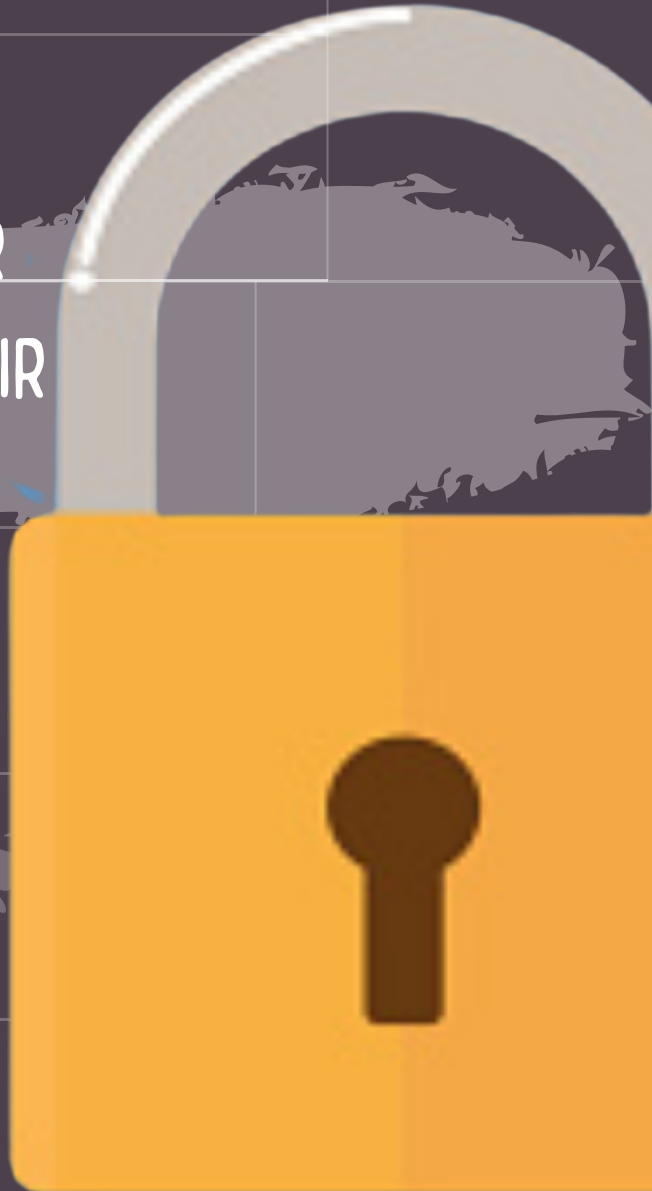
THE SOCIAL PROGRESS INDEX HAS CONSISTENTLY SHOWN THAT SOCIAL SYSTEMS AND SAFETY NETS ACROSS THE WORLD ARE BROKEN. EXISTING GAPS, PRESSURE POINTS AND INEQUALITIES HAVE BEEN EXACERBATED BY THE COVID-19 VIRUS AND MUST BE ADDRESSED IN THE PANDEMIC'S AFTERMATH.



SOCIAL
PROGRESS
IMPERATIVE

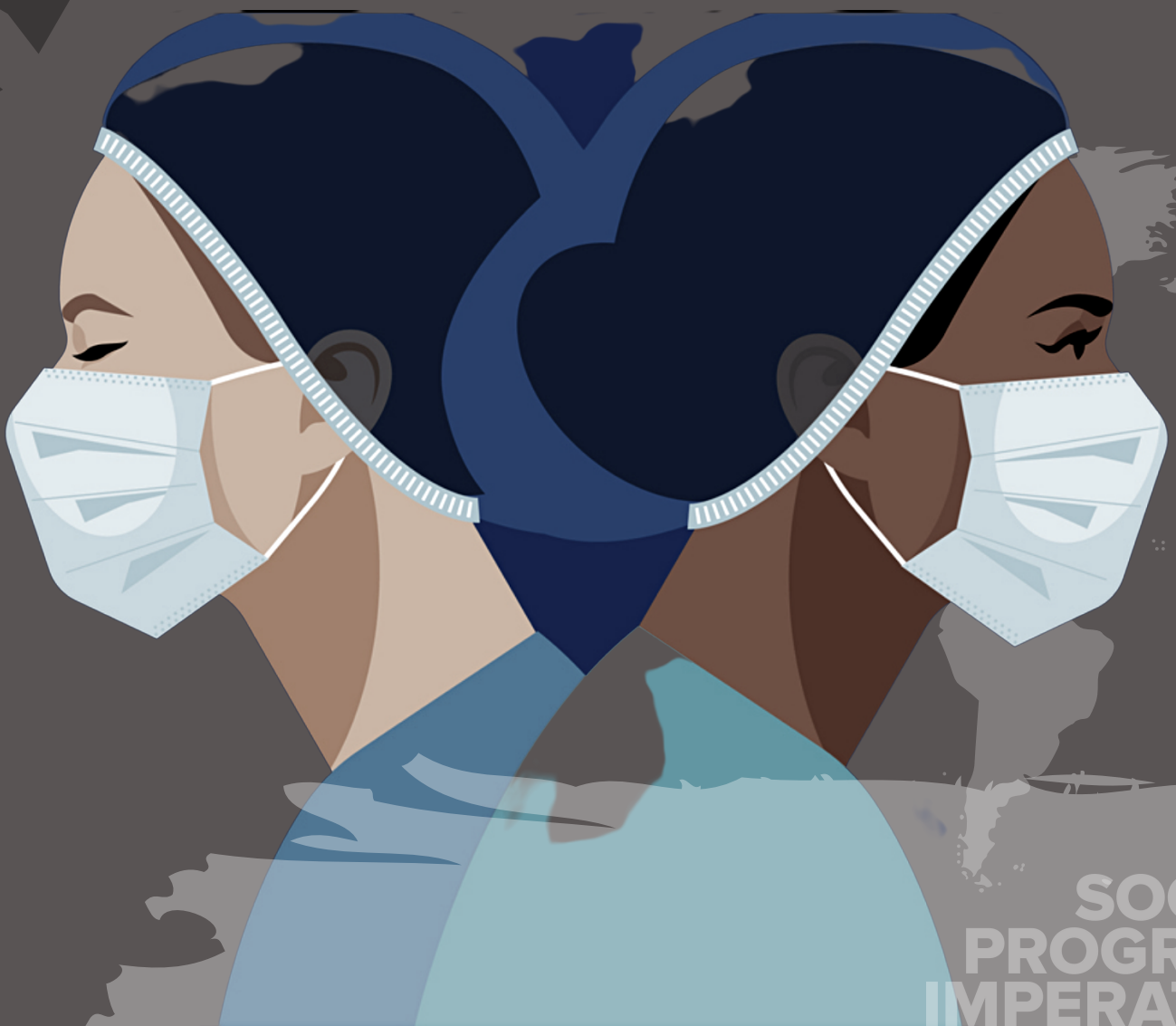


IN 2021 AS COUNTRIES WITH HIGH SOCIAL PROGRESS FACED STRICTER MEASURES – IT DID NOT REDUCE THEIR RESILIENCY TO THE WIDER SOCIAL IMPACTS OF THE COVID CRISIS.

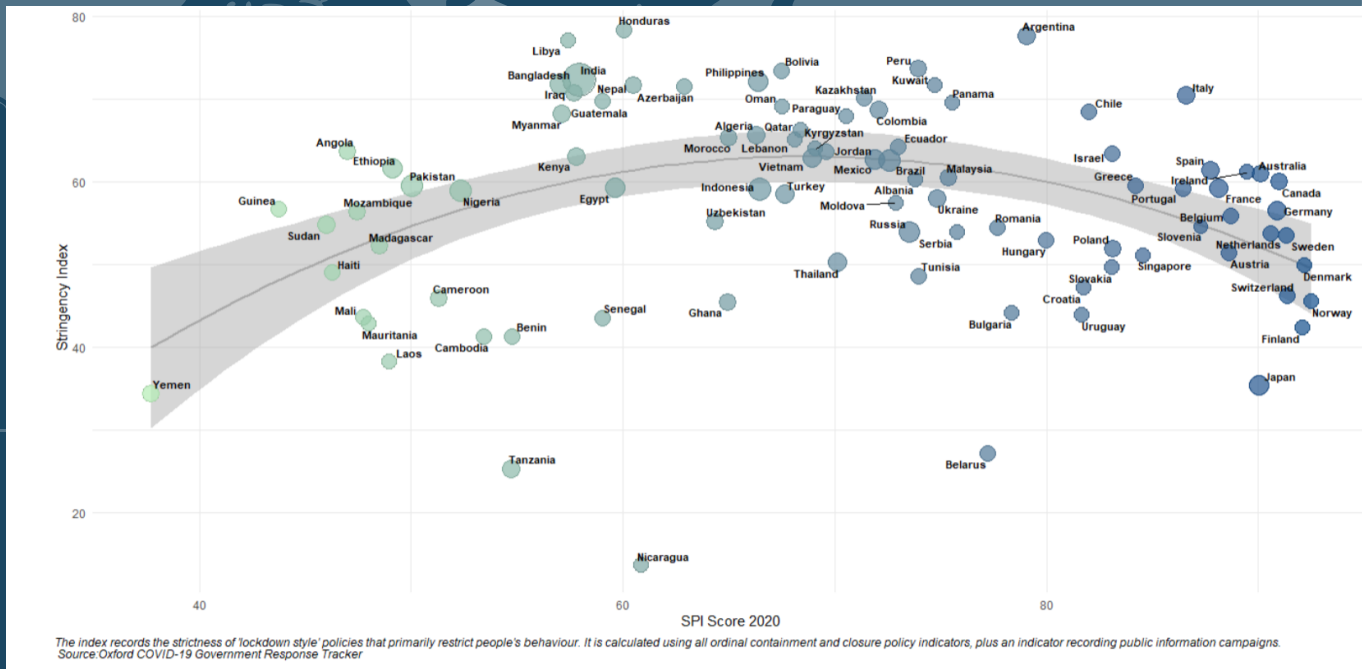


SOCIAL PROGRESS IMPERATIVE

NOTABLY, IN 44 COUNTRIES MEASURED BY
THE INDEX, ACCESS TO QUALITY
HEALTHCARE HAS BECOME MORE UNEQUAL
DURING THE LAST YEAR, WHILE IN THE
MAJORITY OF OTHERS THERE HAS BEEN
LITTLE OR NO IMPROVEMENT.



SOCIAL
PROGRESS
IMPERATIVE



IN 2020 WE SAW A TREND OF COUNTRIES WITH MID-LEVELS OF SOCIAL PROGRESS LOCKING DOWN HARDER AND LONGER – EXACERBATING MENTAL HEALTH AND FOOD INSECURITY ISSUES